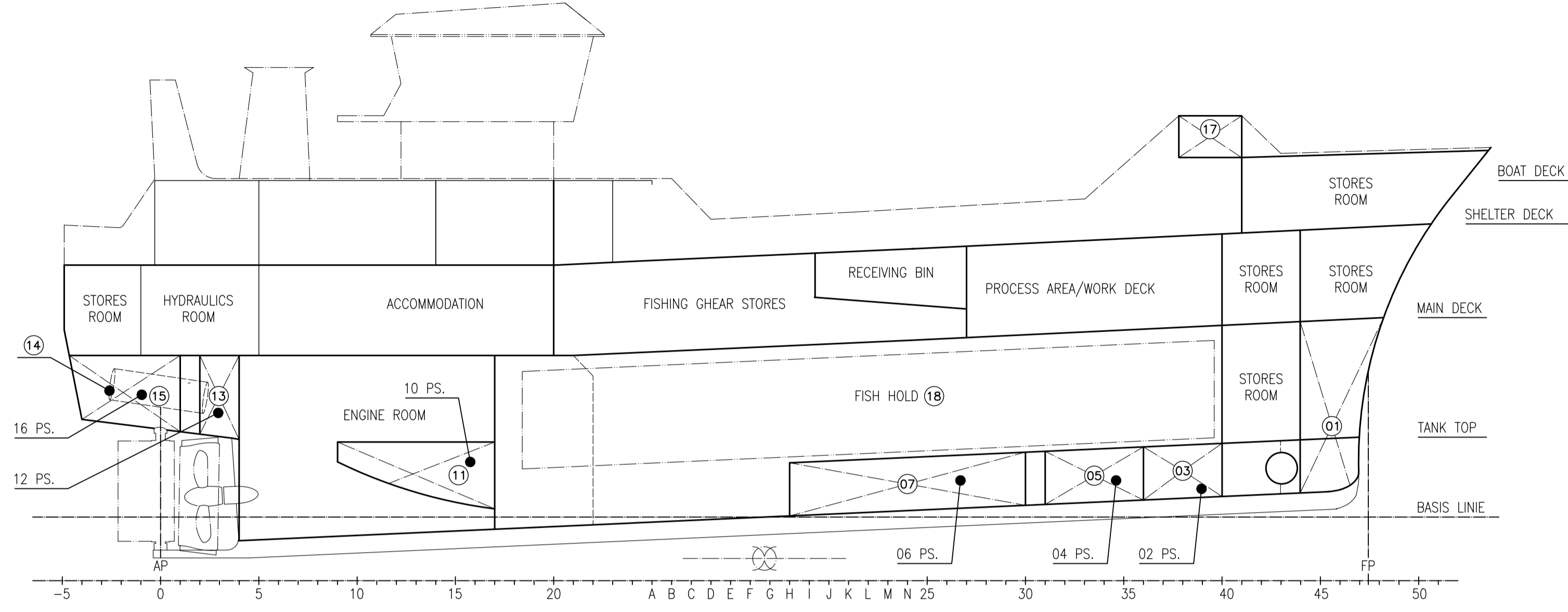
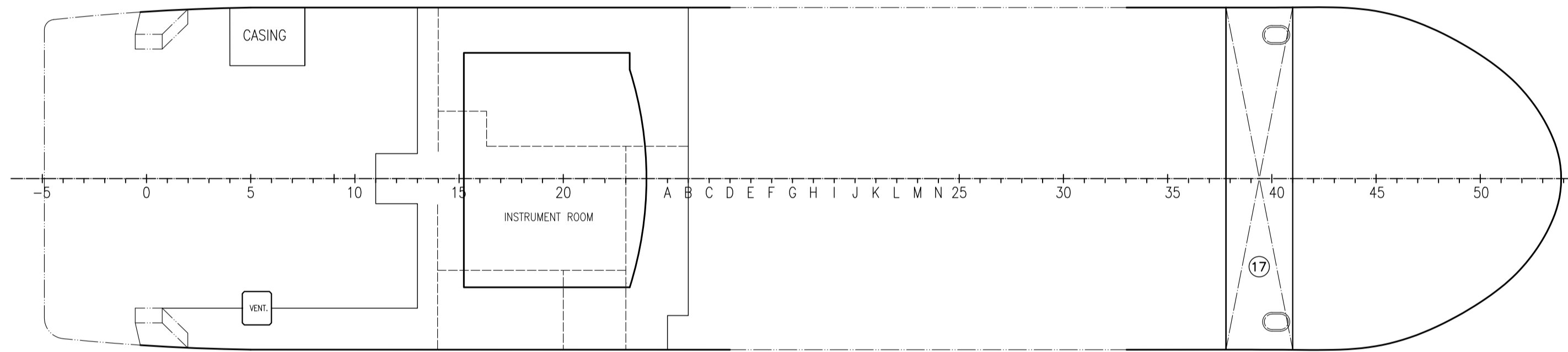


TANK & CAPACITY PLAN

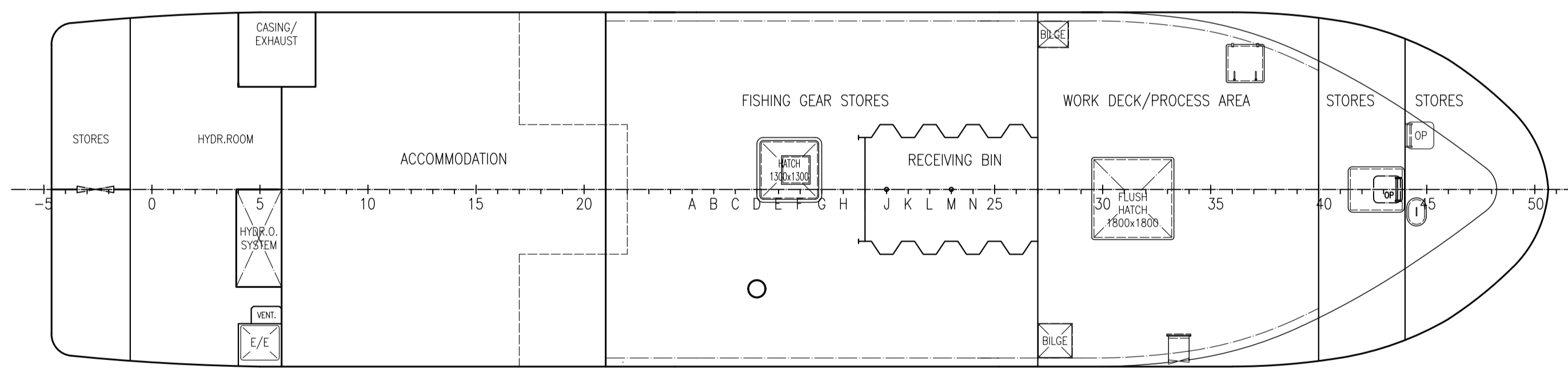
KONGSVARD



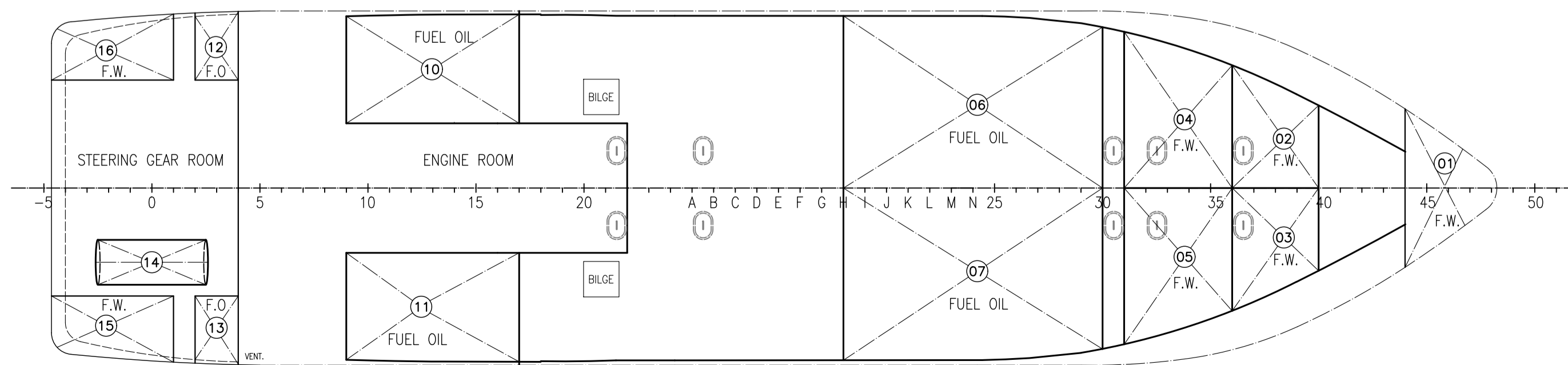
PROFIL



BOAT DECK



MAIN DECK



TANK TOP

FUEL OIL (DIESEL)		RHO = 0,870 t/m ³				
ITEM	DESCRIPTION	Volume [m ³]	Weight [t]	Lcg [m]	Tcg [m]	Vcg [m]
06	FUEL OIL	21,79	18,96	18,834f	1,554p	1,116
07	FUEL OIL	21,82	18,98	18,832f	1,554s	1,115
10	FUEL OIL	10,29	8,95	6,732f	2,610p	1,346
11	FUEL OIL	10,29	8,95	6,732f	2,610s	1,346
12	FUEL OIL	2,79	2,43	1,511f	3,234p	3,169
13	FUEL OIL	2,79	2,43	1,511f	3,234s	3,169
TOTAL CAPACITY		69,77	60,70			

FRESH WATER		RHO = 1.000 t/m ³				
ITEM	DESCRIPTION	Volume [m ³]	Weight [t]	Lcg [m]	Tcg [m]	Vcg [m]
01	FOREPEAK TANK	8,44	8,44	29,619f	0,000	3,580
02	FRESH WATER TANK	4,57	4,57	25,935f	0,969p	1,307
03	FRESH WATER TANK	4,57	4,57	25,934f	0,971s	1,307
04	FRESH WATER TANK	7,42	7,42	23,691f	1,293p	1,259
05	FRESH WATER TANK	7,42	7,42	23,691f	1,293s	1,259
15	FRESH WATER TANK	5,29	5,29	0,681a	3,170s	3,328
16	FRESH WATER TANK	5,29	5,29	0,681a	3,170p	3,328
TOTAL CAPACITY		43,00	43,00			

BALLAST WATER		RHO = 1.025 t/m ³				
ITEM	DESCRIPTION	Volume [m ³]	Weight [t]	Lcg [m]	Tcg [m]	Vcg [m]
17	ANTI ROLL TANK	13,70	14,04	26,700f	0,000	9,594
TOTAL CAPACITY		13,70	14,04			

SEWAGE TANK		RHO = 1.025 t/m ³				
ITEM	DESCRIPTION	Volume [m ³]	Weight [t]	Lcg [m]	Tcg [m]	Vcg [m]
14	SEWAGE TANK	2,07	2,12	0,000	1,700s	3,119
TOTAL CAPACITY		2,07	2,12			

FISH HOLD (REFRIGERATED HOLD for BOXED CARGO)		RHO = N.A. t/m ³				
ITEM	DESCRIPTION	Volume [m ³]	Weight [t]	Lcg [m]	Tcg [m]	Vcg [m]
18	FISH HOLD	302,40		18,207	0,000	3,083
TOTAL CAPACITY		302,40				

MAIN DIMENSION:	
LOA.	36,28 m
LENGTH PP	30,72 m
RULE LENGTH (ITCC -69)	32,36 m
BREADTH MOLDED	8,20 m
DEPTH TO MAIN DECK	4,11 m
DEPTH TO SHELTER DECK	6,41 m
FRAME DISTANCE	500 mm

Rev.	Date	Revision text	Scale:	Drawing No.:	
6	07.04.2021	CORRECTED PROFILE VIEW AND TEXT ON STORES ROOM	1:100	2397 - 101-002	
5	14.01.2020	ACC TO UPDATED SOUNDING TABLES	Format		
4	27.11.2019	ACC. TO GENERAL ARRANGEMENT. ALL VCG. CORRECTED	A1		
3	27.08.2019	FISH HOLD ADDED-NUMBERS CORRECTED			
			Project No.:	SFI No.:	Seq. No.:
			Postboks 111, DK-9900 Frederikshavn Tlf.: +45 96 20 70 80, Telefax: +45 96 20 70 81 E-mail: shipcon@shipcon.dk, www.shipcon.dk		
			Title: KONGSVARD TANK AND CAPACITY PLAN		
			Customer/Customer No.: KONGSGARD		

This drawing is the property of ShipCon aps. It may not be copied or imported to any unauthorized third party. It may not be used for other project than for which it was originally ordered. The receipt of the drawing implies that the conditions mentioned herein are accepted.