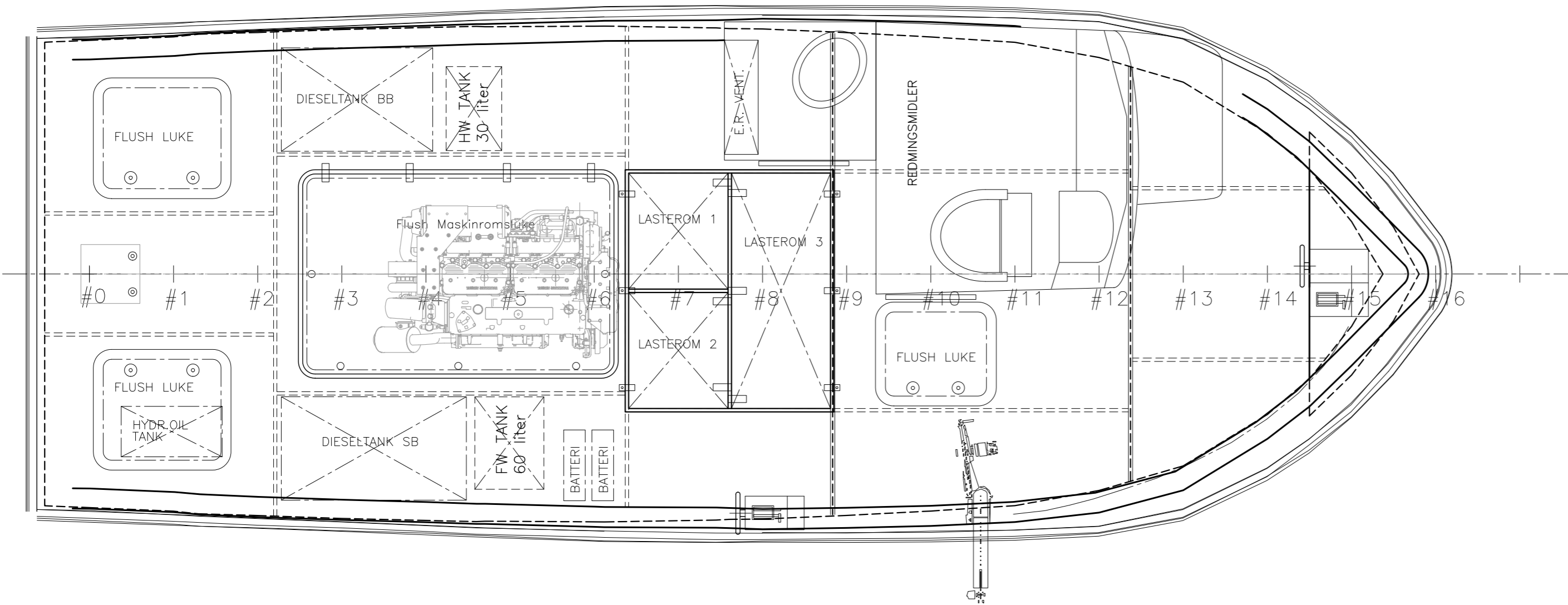
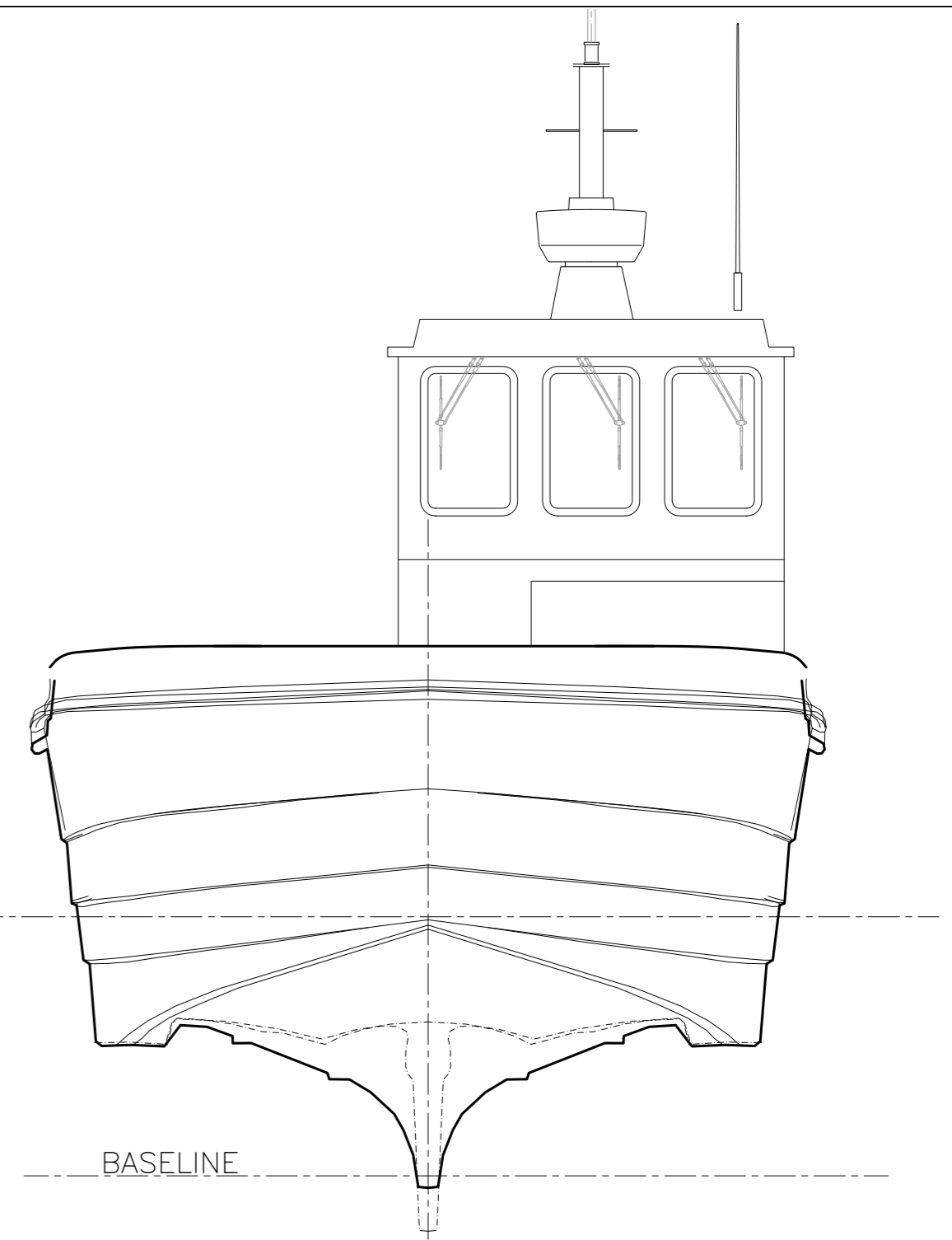
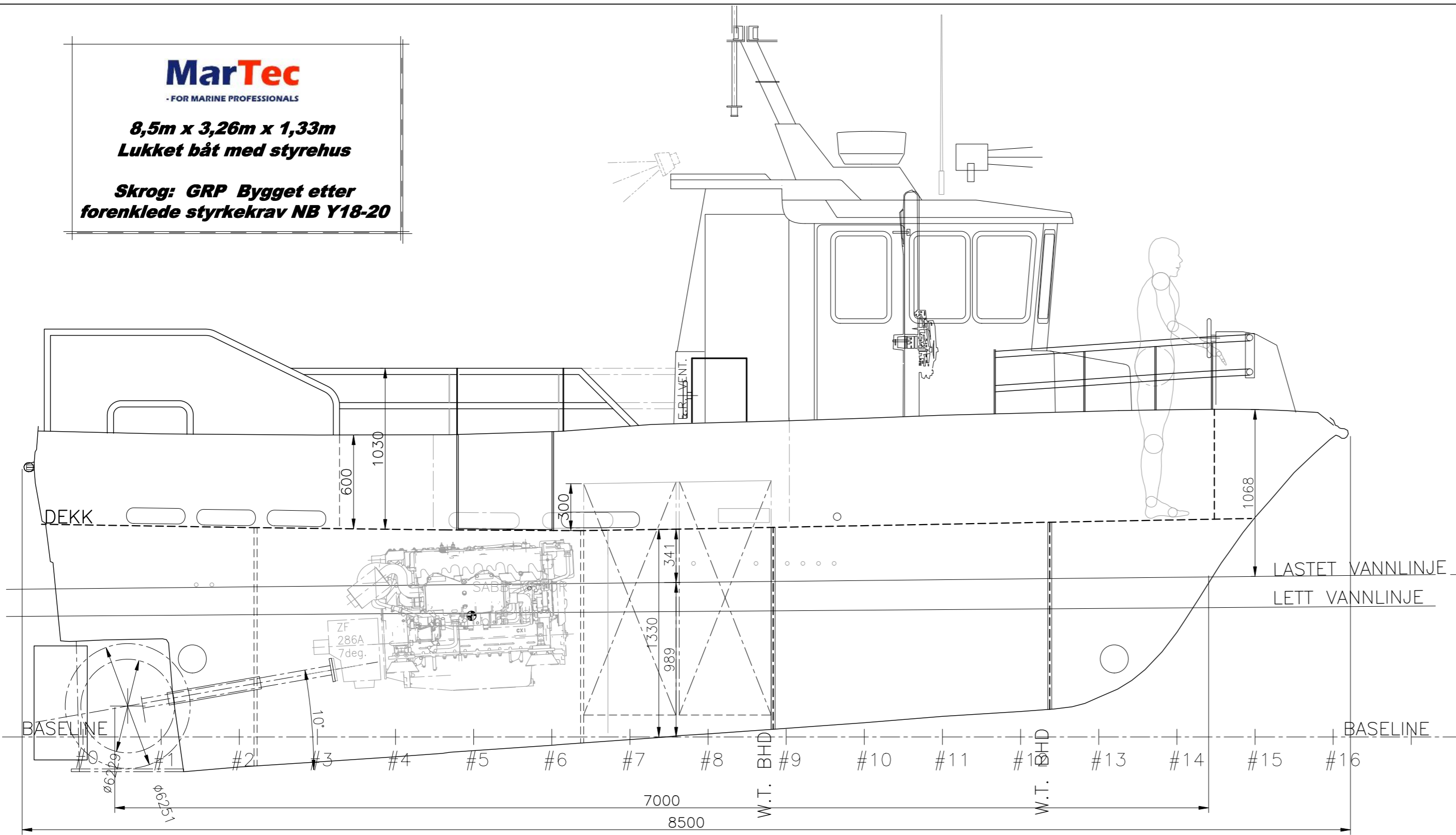


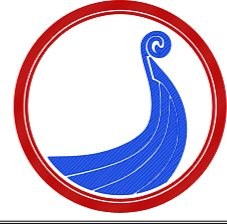
MarTec
- FOR MARINE PROFESSIONALS

8,5m x 3,26m x 1,33m
Lukket båt med styrehus

Skrog: GRP Bygget etter forenklede styrkekrav NB Y18-20



HOVED DIMENSJONER	
Lengde -over alt	8,5 m
Lengde -mld.	7,50 m
Bredde på spant	3,26 m
Dybde i riss	1,330 m
Største dypgående	0,989 m
Fartsområde - Fiske type / metode	FJORDFISKE Leppefisk / teiner
KAPASITETER:	
Levende fisk tank	2000 liter
Brennolje	620 liter

SIGN/DATE	TITLE	DRAWN	DATE
	GA PLAN – B.No.3,4&5	MaKi	15.09.2016
DESCRIPTION	PROJECT	CHECKED	DATE
	1064 – MarTec	ABa	15.06.2016
REV	SCALE	FORMAT	REV
	1:25	A2	–
DESCRIPTION		SHEET	DRAWING NUMBER
 GLESVÆR SHIP DESIGN AS NAVAL ARCHITECTS AND MARINE ENGINEERS GJERTRUÐVEIEN 11D, 5353 STRAUME, NORWAY TEL.: +47 489 97 626 / +47 926 63 281 EMAIL: office@gsdesign.no WEB: www.gsdesign.no		1 OF 1	16044-101-01
<i>Glesvær Ship Design</i>			